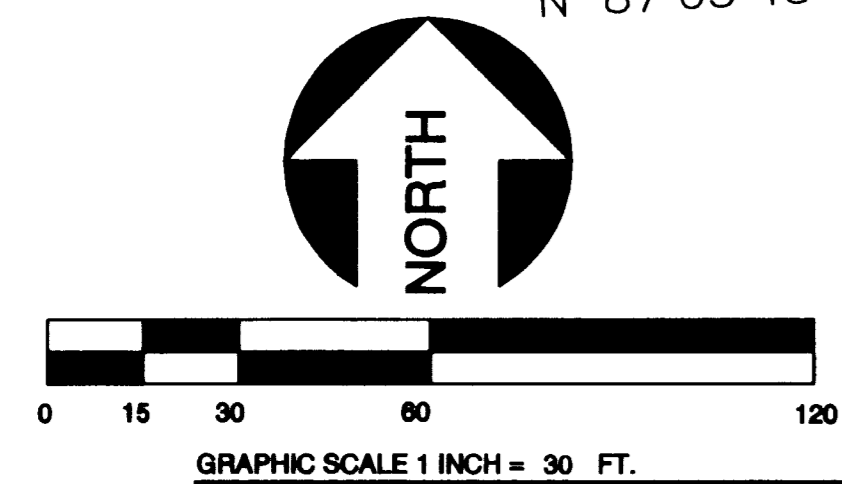
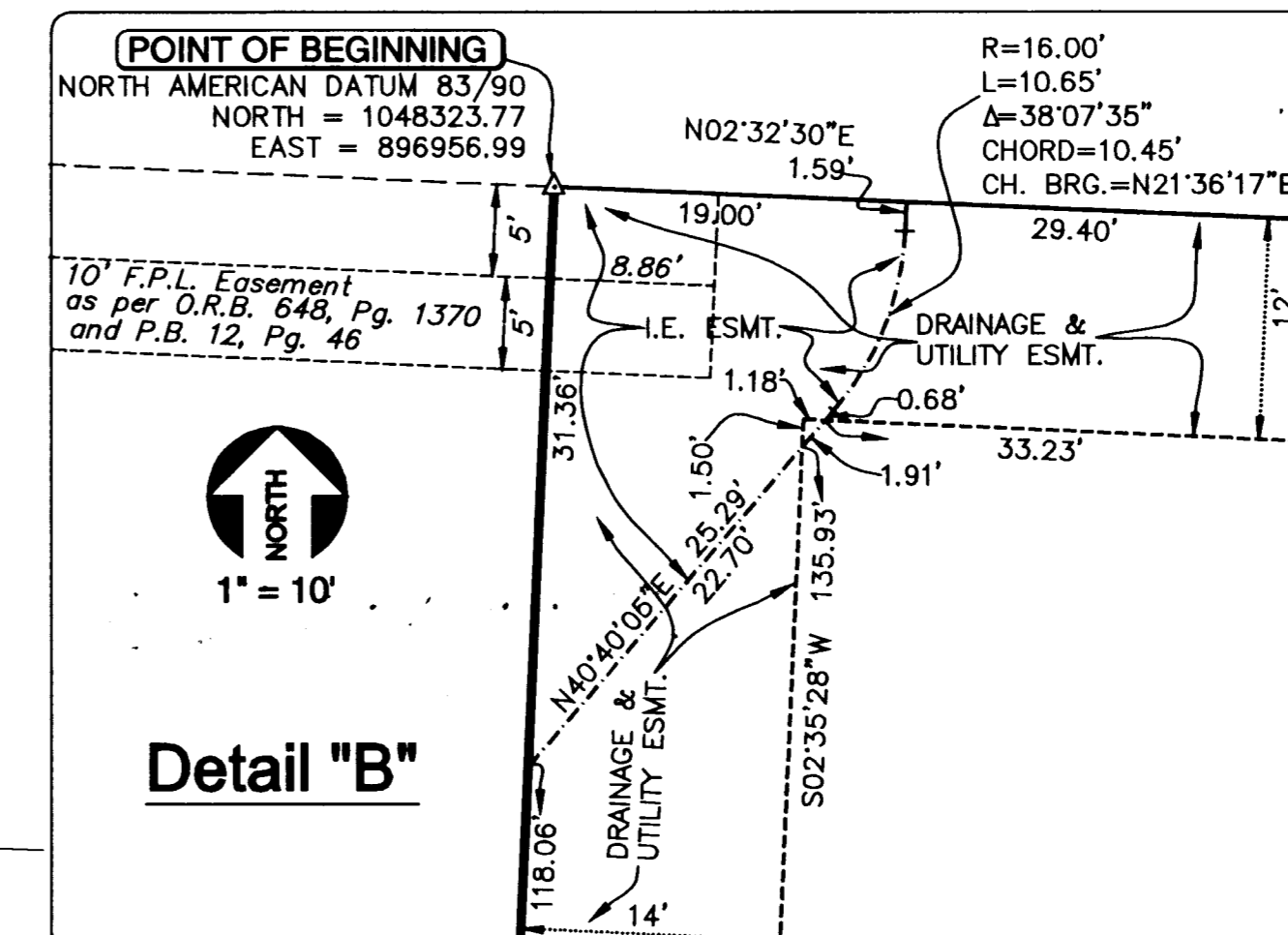


A PLAT OF PORTSIDE

BEING A REPLAT OF A PORTION OF PARCEL A OF NORTH SHORE PLAZA, AS RECORDED IN PLAT BOOK 12, PAGE 46 OF THE PUBLIC RECORDS OF MARTIN COUNTY, FLORIDA, ALSO BEING A PORTION OF GOVERNMENT LOT 2, SECTION 32, TOWNSHIP 37 SOUTH, RANGE 41 EAST, CITY OF STUART, MARTIN COUNTY, FLORIDA

CLERK'S RECORDING CERTIFICATE
 I, MARSHA EWING, CLERK OF THE CIRCUIT COURT OF MARTIN COUNTY, FLORIDA, HEREBY CERTIFY THAT THIS PLAT WAS FILED FOR RECORD IN PLAT BOOK 86, PAGE 81, MARTIN COUNTY, FLORIDA, PUBLIC RECORDS THIS DAY OF _____ 2009.

MARSHA EWING, CLERK OF THE CIRCUIT COURT
 MARTIN COUNTY, FLORIDA
 FILE NUMBER _____ BY _____ DEPUTY CLERK

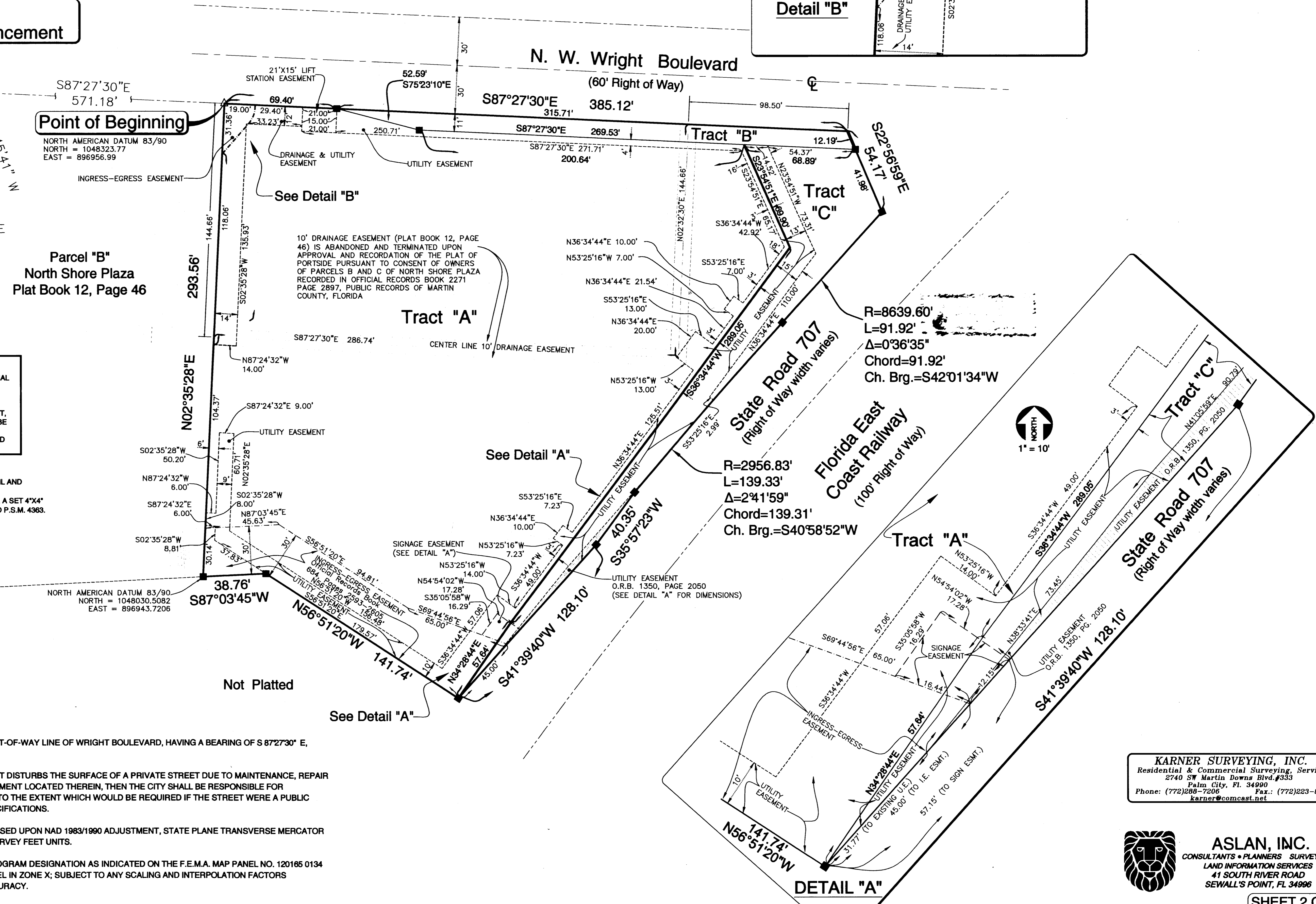


NOTICE
 1. THIS PLAT, AS RECORDED IN ITS ORIGINAL FORM IN THE PUBLIC RECORDS, IS THE OFFICIAL DEPICTION OF THE SUBDIVIDED LANDS DESCRIBED HEREON AND WILL IN NO CIRCUMSTANCES BE SUPPLANTED IN AUTHORITY BY ANY OTHER FORM OF THE PLAT, WHETHER GRAPHIC OR DIGITAL. THERE MAY BE ADDITIONAL RESTRICTIONS THAT ARE NOT RECORDED ON THIS PLAT THAT MAY BE FOUND IN THE PUBLIC RECORDS OF THIS COUNTY.

- LEGEND AND ABBREVIATIONS**
- △ = FOUND PERMANENT CONTROL POINT, A NAIL AND DISK STAMPED P.S.M. 4363.
 - = SET PERMANENT REFERENCE MONUMENT, A SET 4"x4" CONCRETE MONUMENT AND DISK STAMPED P.S.M. 4363.
 - R. = ARC RADIUS
 - L. = ARC LENGTH
 - Δ = ARC INCLUDED ANGLE
 - CH. BRG. = ARC CHORD BEARING
 - P.S.M. = PROFESSIONAL SURVEYOR AND MAPPER
 - O.R.B. = OFFICIAL RECORDS BOOK
 - PG. = PAGE
 - U.E. = UTILITY EASEMENT
 - I.E. = INGRESS-EGRESS
 - ESMT. = EASEMENT

SURVEYOR'S NOTES

1. BEARINGS REFER TO THE SOUTH RIGHT-OF-WAY LINE OF WRIGHT BOULEVARD, HAVING A BEARING OF S 87°27'30" E, ASSUMED.
2. IN THE EVENT THAT THE CITY OF STUART DISTURBS THE SURFACE OF A PRIVATE STREET DUE TO MAINTENANCE, REPAIR OR REPLACEMENT OF A PUBLIC IMPROVEMENT LOCATED THEREIN, THEN THE CITY SHALL BE RESPONSIBLE FOR RESTORING THE STREET SURFACE ONLY TO THE EXTENT WHICH WOULD BE REQUIRED IF THE STREET WERE A PUBLIC STREET, IN ACCORDANCE WITH CITY SPECIFICATIONS.
3. COORDINATES SHOWN HEREON ARE BASED UPON NAD 1983/1990 ADJUSTMENT, STATE PLANE TRANSVERSE MERCATOR PROJECTION, FLORIDA EAST ZONE, US SURVEY FEET UNITS.
4. THE NATIONAL FLOOD INSURANCE PROGRAM DESIGNATION AS INDICATED ON THE F.E.M.A. MAP PANEL NO. 120185 0134 F, DATED 10/04/2002, LOCATES THE PARCEL IN ZONE X; SUBJECT TO ANY SCALING AND INTERPOLATION FACTORS ASSOCIATED WITH MAPPING OF THIS ACCURACY.



KARNER SURVEYING, INC.
 Residential & Commercial Surveying Services
 2740 SW Martin Downs Blvd. #333
 Palm City, FL 34990
 Phone: (772)288-7206 Fax: (772)283-8181
 karnersurveying.com

ASLAN, INC.
 CONSULTANTS • PLANNERS • SURVEYORS
 LAND INFORMATION SERVICES
 41 SOUTH RIVER ROAD
 SEWALL'S POINT, FL 34986